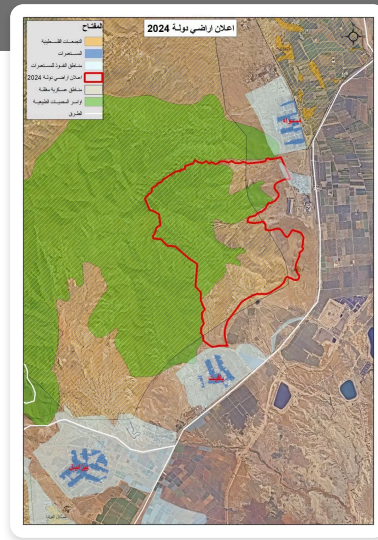
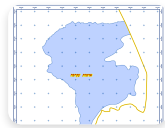


A map showing the lands that were declared as state lands from the village of Aqraba, east of Nablus

2024-03-20



خرائط الأمر العسكري



Spatial clarifications

The attached map shows the areas declared by the occupying state as state land from the village of Aqraba. The area targeted by the military order amounts to a total of 8,159.8 dunums. It is located to the east of the village of Aqraba, specifically from Jabal Al-Qurain, Natural Basin 13, and Natural Basin 14, and it meets from the east with the Fasayil Plain.

Through this confiscation, the occupying state is working to expand the borders of the Yafit colony, which is established on the lands of citizens in the region, which opens the way for further settlement expansion in the region. It is noted from the map of the military command that the expansion will create geographical continuity between the colony and the Jordan Valley Regional Council (Bakat Herdin.), which is located on the eastern border of the lands of Aqraba at the point of contact with the Fasayil Plain, noting that a notice was issued by the occupation civil administration on March 17, 2024, requiring the expansion of the influence of the work of the Regional Council.

The illustrated map of the military order, prepared by the CWRC crews, indicates that the military order overlaps with the natural reserve order declared by the occupying state in the region (likely in 1979), and the area of 4,242 dunums of the area of the military order overlaps with the previous natural reserve order, in addition to The same advertisement overlaps with an area (to the east of the advertisement) closed according to a military order for the purposes of shooting and allocated by the occupation army for military training, knowing that the area is empty and no military training is taking place in it.

The occupying state, specifically at the end of the year 2022, had declared an area of 3,492 dunums of village land, specifically to the northwest of the area declared by the new order, as state land in order to correct the conditions of the Yafit colony itself, given that a large part of the colony's lands were established in accordance with an order decision. military.

